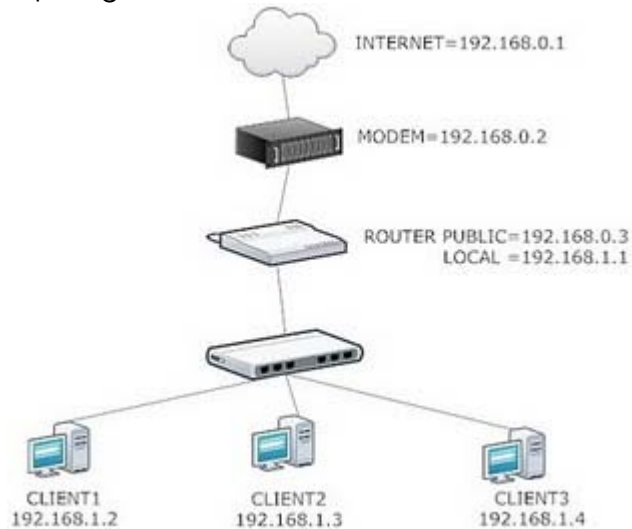
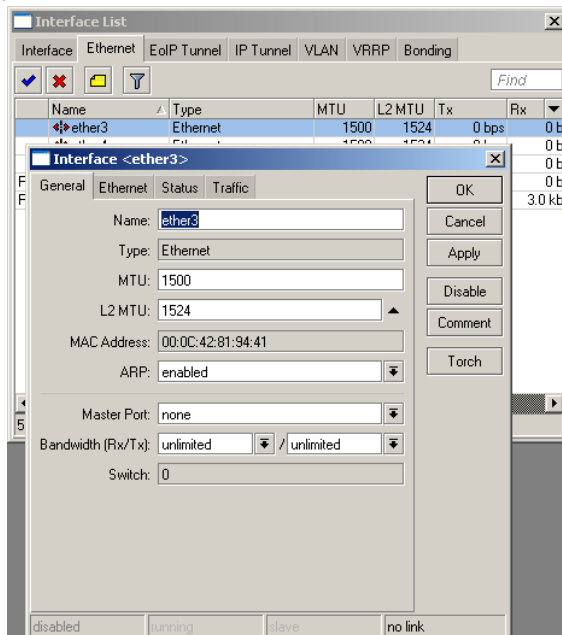


Cara setting Mikrotik Routerboard RB750 dengan koneksi Internet ISP

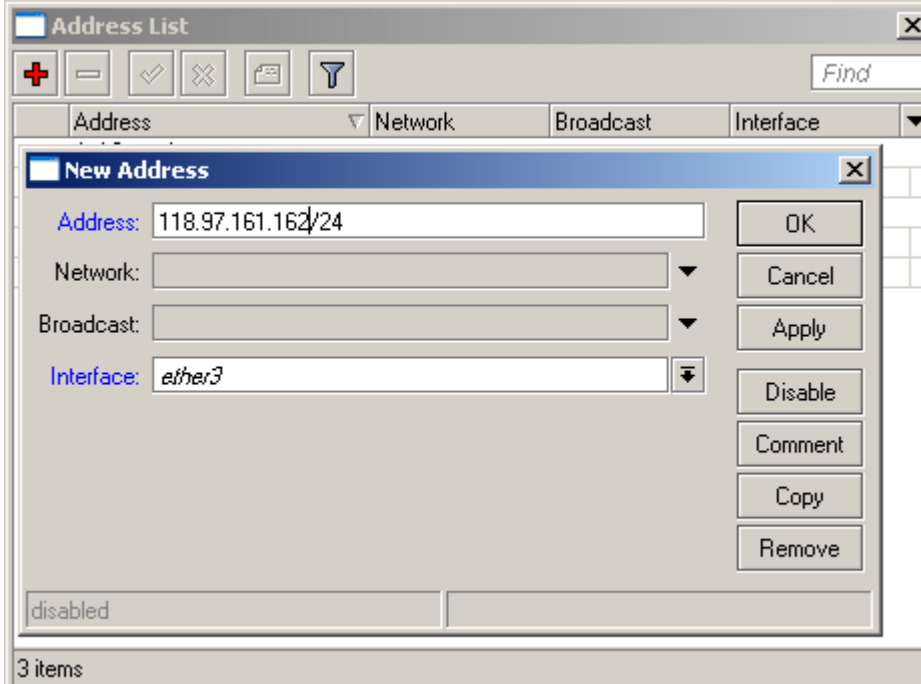
Topologi:



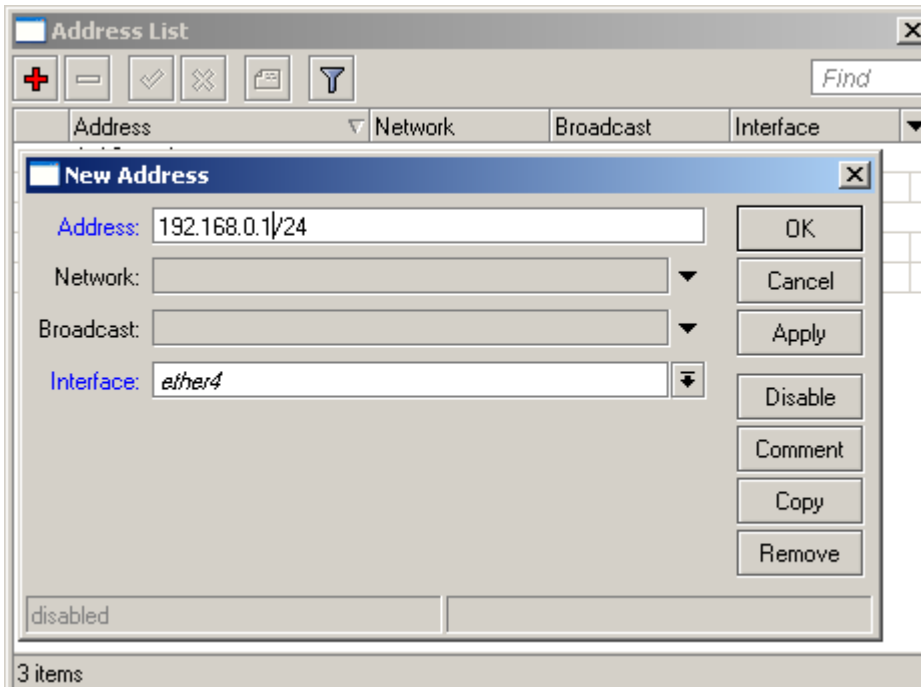
- Topologinya seperti diatas
- Colokkan kabel LAN ether1 di Routerboard ke Modem
- Colokkan kabel LAN ether2 di Routerboard ke Switch ke Hub
- Jalankan RB750 menggunakan WinBox (download di site mikrotik)
- Dimenu utama WinBox click "Interface"
/interface set 0 name=public
/interface set 1 name=local



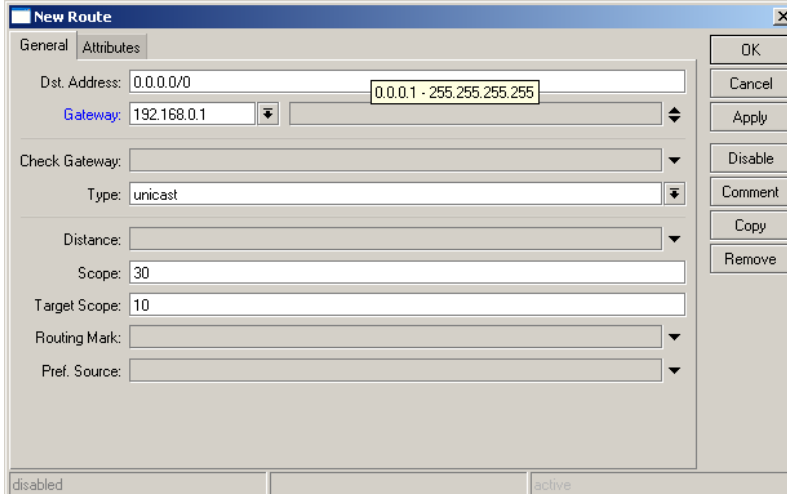
- Masukkan IP Internet (IP yang di berikan ISP Anda) ke interface 0, (ini hanya IP contoh saja)
/IP Address add address=118.97.161.162 netmask=255.255.255.248 interface=public



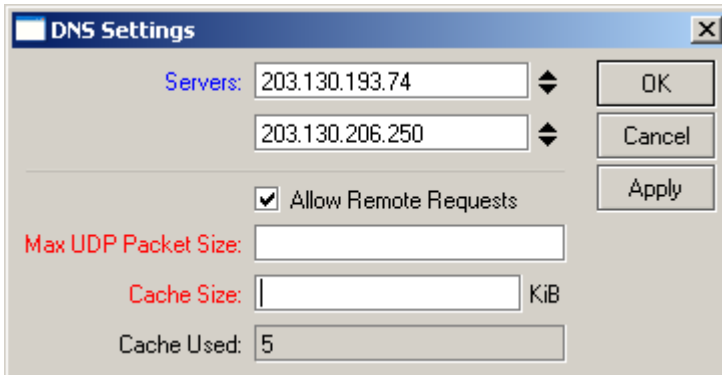
- Masukkan IP Local (IP Client) ke interface 1
/IP Address=192.168.0.1 netmask-255.255.255.0 interface=local



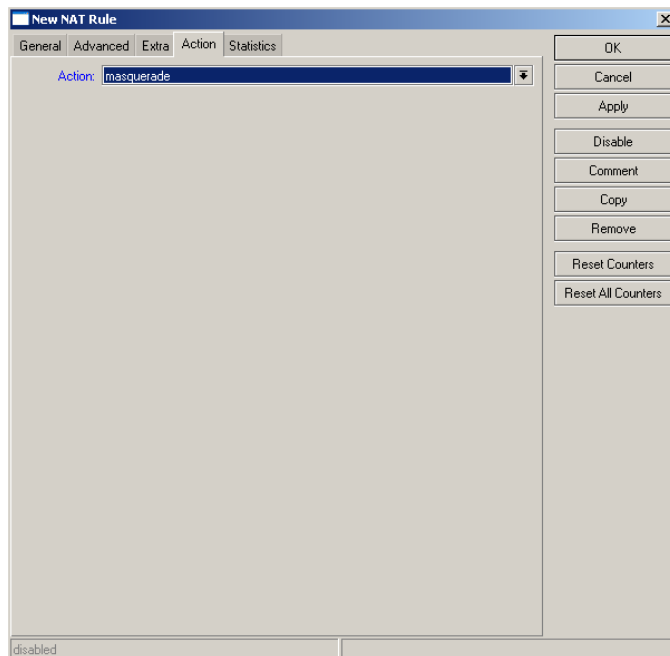
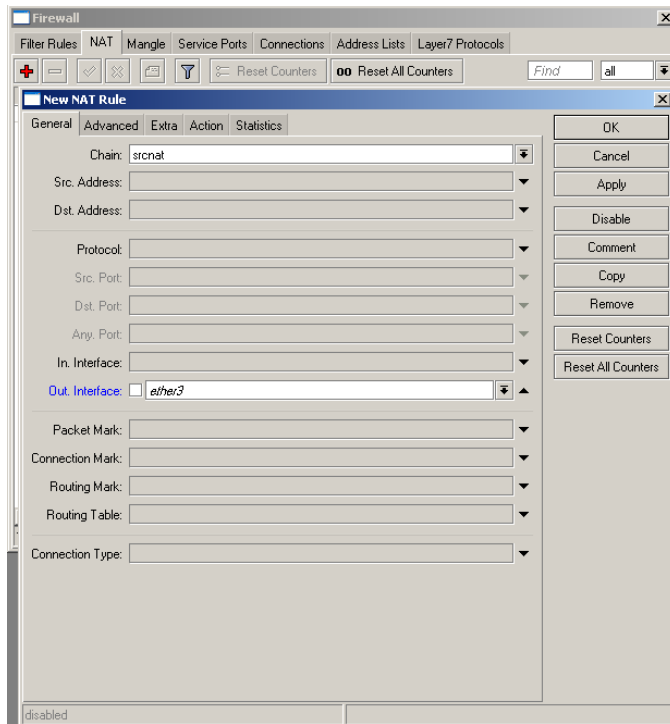
- Masukkan Gateway, (Gateway yang diberikan ISP Internet Anda)
(ini hanya IP Gateway contoh saja)
/IP Route Add Gateway=192.168.0.1



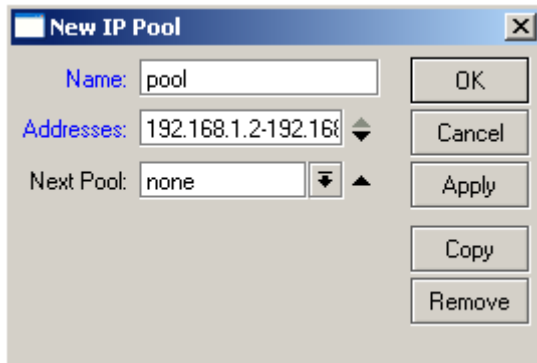
- Masukkan DNS (DNS yang diberikan ISP Internet Anda),
(ini hanya DNS contoh saja)
/IP DNS set servers=203.130.193.74, 203.130.206.250 allow-remote-request=yes



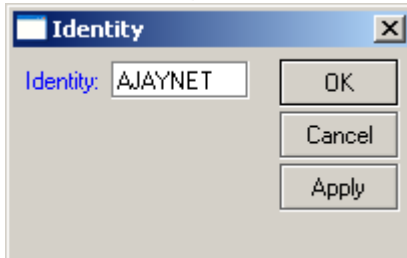
- Masukkan NAT
/IP Firewall NAT add chain=srcnat out-interface=public action=masquerade



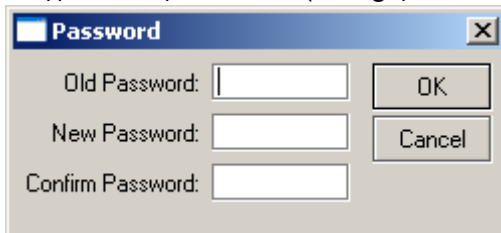
- Masukkan IP Pool
/IP Pool add name=pool ranges=192.168.1.2-192.168.1.254



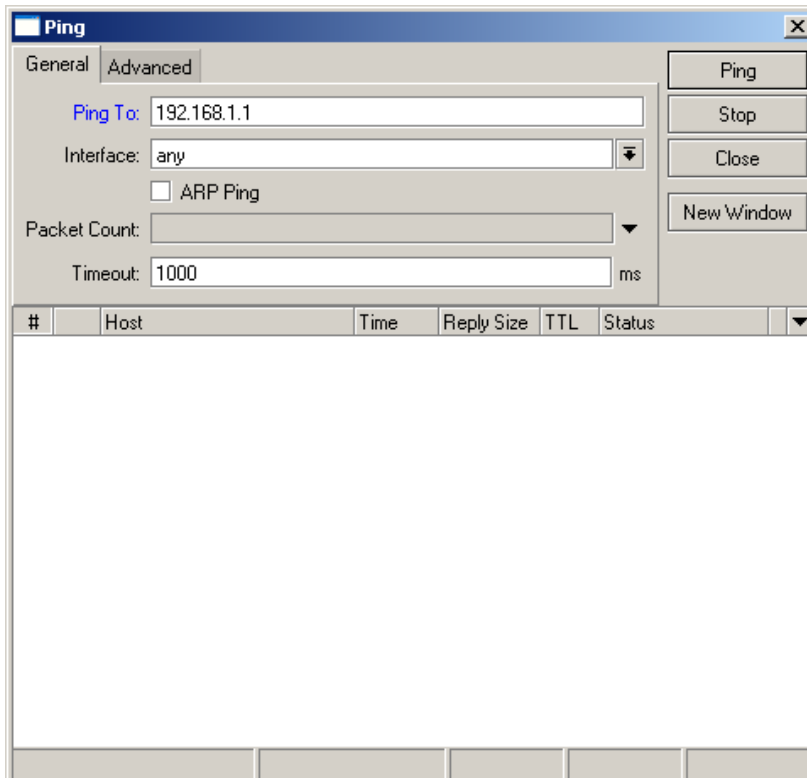
- Masukkan nama Router Anda (ini hanya contoh saja)
/SYSTEM identity set name=Router_Saya



- Masukkan Password
/System password (kemudian tekan Enter 2 kali)
New password:*****
Retype new password: (ulangi password Anda)

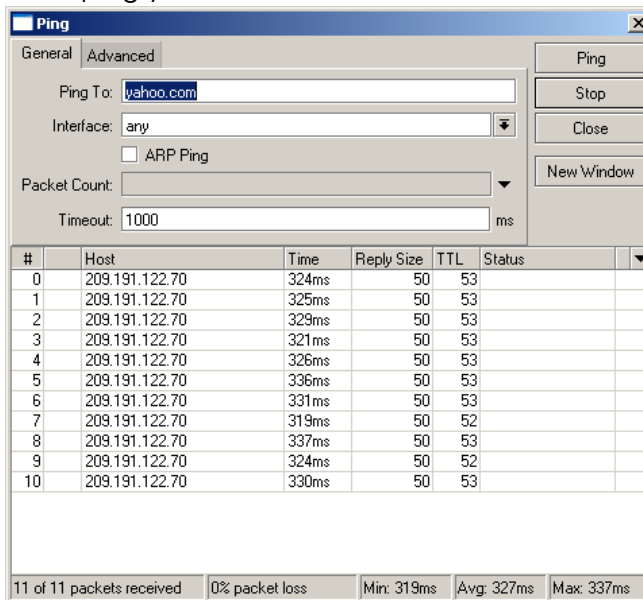


- Untuk Tes, masukkan IP di PC Anda, IP kelanjutan local Routerboard, misalnya IP Local Routerboard 192.168.1.1 berarti IP di PC Anda 192.168.1.2 – 192.168.1.254, dan masukkan subnet 255.255.255.0 dan gateway IP routerboard: 192.168.1.1 dan DNS yaitu IP routerboard Anda juga 192.168.1.1
/Tools ping 192.168.1.1



Kalo reply berarti sudah pas settingannya

Tes ping ke internet
/Tools ping yahoo.com



Selamat Mencoba